

JAR SYSTEMS

Adapt4

Owner's Manual Version C



www.JAR-Systems.com | 866.393.4202

Adapt4 Owner's Manual: Table of Contents

Model #: ADAPT4-USBC

Included with the Adapt4 USB-C Station 2

- Included Items
- Optional Additions

Getting Started 3

- Removing the Door (optional)
- Preventing Removal of the USB-C Module
- Preventing the Station from Being Transported (optional)
- Wall Mounting Bracket (optional, not included)
- Connect the USB-C Charging Cables 4
- Connect the Power Cable
- Removing Device Bay Dividers (optional)
- Transporting the Station

Using the Quick-Sense USB-C Module

- How it Works
- Removing the Quick-Sense USB-C Module for Tabletop Use 5

Warnings 6

- Proper Usage and Safety

Model #: ADAPT4-AC

Included with the Adapt4 AC Station 6

- Included Items
- Optional Additions

Getting Started 7

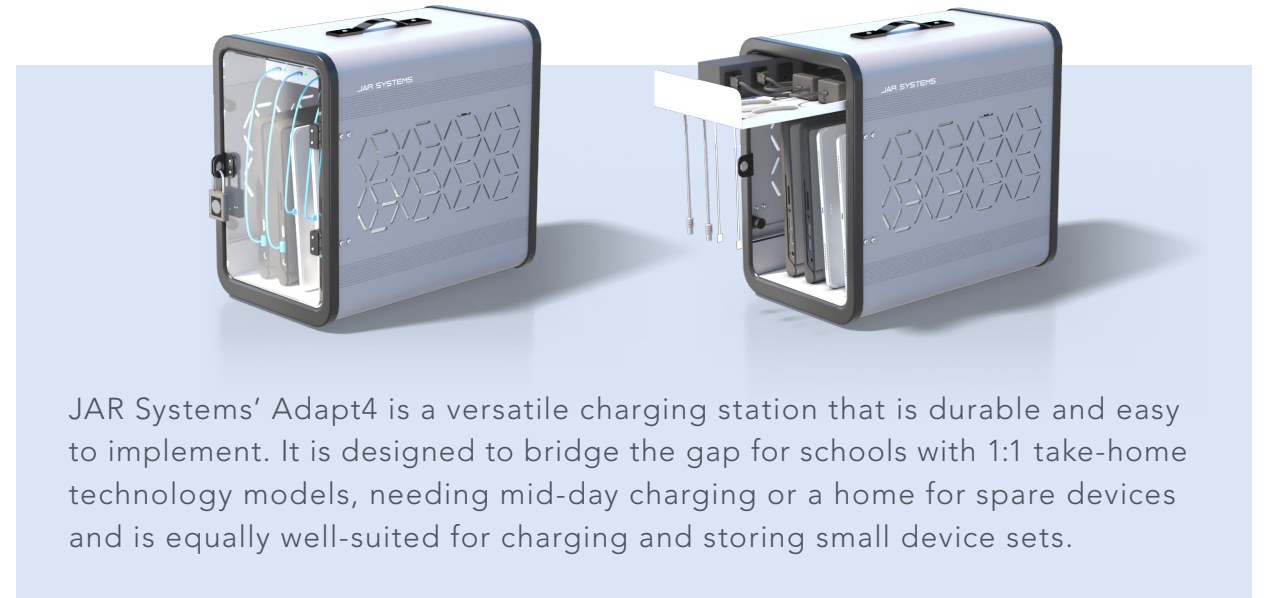
- Removing the Door (optional)
- Preventing Removal of the Charging Cables
- Preventing the Station from Being Transported (optional)
- Wall Mounting Bracket (optional, not included)
- Installing Charging Cables 8
- Removing Device Bay Dividers (optional) 9
- Transporting the Station

Upgrading to USB-C Module

- Replaceable Power Module

Warnings 10

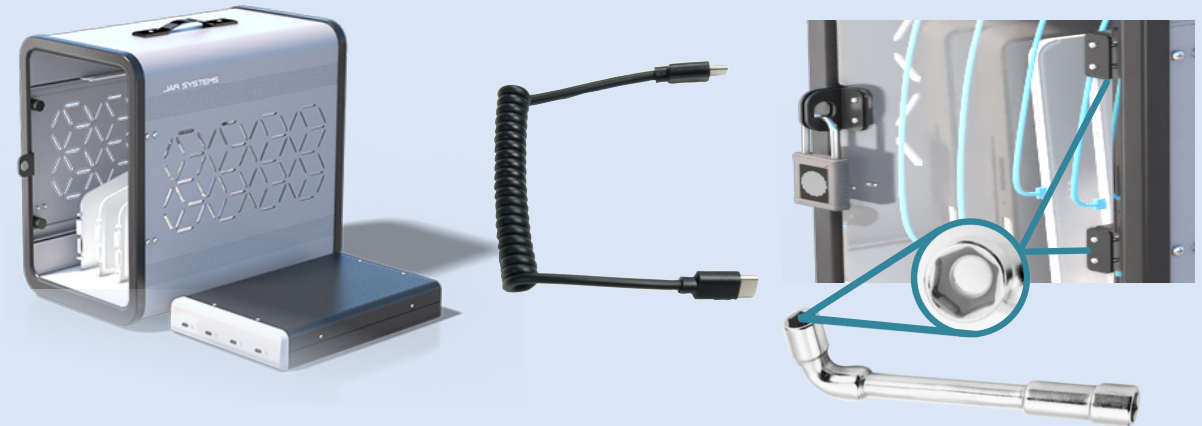
- Proper Usage and Safety



JAR Systems' Adapt4 is a versatile charging station that is durable and easy to implement. It is designed to bridge the gap for schools with 1:1 take-home technology models, needing mid-day charging or a home for spare devices and is equally well-suited for charging and storing small device sets.

Included with the Adapt4 USB-C Station

Adapt4 Station · Quick-Sense USB-C Module · Removable Power Cable
Four USB-C to USB-C Charging Cables · Keyed padlock · Wrench

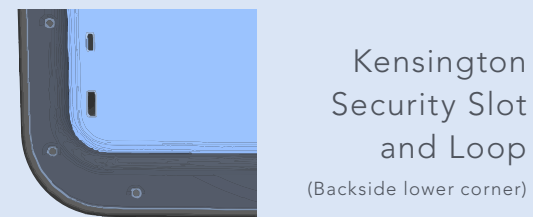
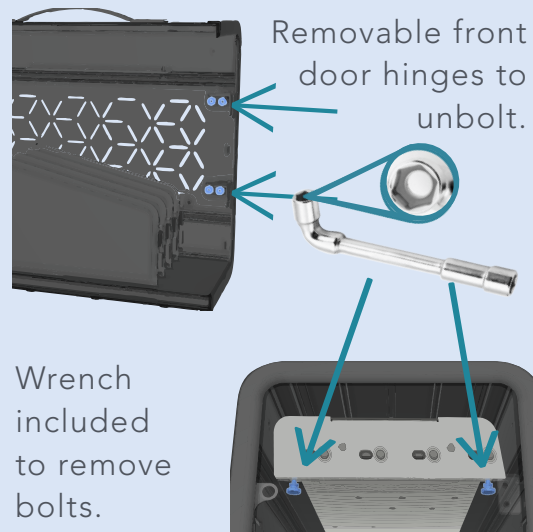


Optional Additions (Not Included)

Wall Mounting Bracket

Emulator Cables to Connect Non-USB-C Devices

Disclaimer: Failure to read, thoroughly understand, and follow all instructions can result in serious personal injury, damage to equipment, or voiding of factory warranty. It is the installer's responsibility to make sure all mounting systems are properly assembled and installed using the instructions provided. This information is the intellectual property of JAR Systems LLC and may not be distributed, duplicated or copied in part or full without the written permission. Since the use of this information, the equipment connected and the conditions by which any JAR Systems product is used is beyond the control of JAR Systems, it is the obligation of the owner and/or user to determine the correct and safe use of any equipment and product. To the extent that the law permits, any liability which may be incurred as a result of the use or future use of a product manufactured or sold by JAR Systems is limited to the cost of repairing or replacing the failed product or component at the discretion of JAR Systems either within, or outside of warranty periods, and does not extend to any loss or damage which may be caused as a consequence of misuse or failure of the equipment or product or the information contained herein. JAR Systems shall not in any event be liable for economic loss of profits, indirect, special, bodily injuries or consequential damages. Specifications and images are for illustration purposes only. Final product may differ and is subject to change without notice.



Getting Started

Removing the Door (optional)

The door can be disconnected from the station by removing the four bolts connecting the door hinge to the inside of the frame of the station. This allows for open and unimpeded use of the charging station.

Preventing Removal of the USB-C Module

The Adapt4 comes with two bolts installed which prevents removal of the USB-C module when the door is open or not present. The bolts can be removed with the wrench to allow the module to be easily removed from the station.

Preventing the Station from Being Transported (optional)

Adapt4 stations feature a Kensington® Security Slot™ and a security loop which enables users to utilize a locking cable to secure the station in place. (locking cables not included).

Wall Mounting Bracket (optional, not included)

Mount the bracket using included hardware to fasten the taller side of the bracket to the wall. Attach the provided hardware to one side of the station for it to slide into notches in the mounting bracket and secure into the bracket with the screws through the front.

WARNING: Failure to provide adequate structural strength for this mounting system can result in serious personal injury or damage to equipment. It is the installer's responsibility to make sure the structure to which this mounting system is attached can support five times the combined weight of all equipment. Reinforce the structure as required before installing the mounting system. Always ensure that proper hardware is used for the wall surface type. Never operate this mounting system if it is damaged. Contact JAR Systems for replacement or repair.



Connect the USB-C Charging Cables

Plug the supplied USB-C to USB-C cables into the four charging ports on the front of the Quick-Sense module. It is recommended to only use the supplied cables.

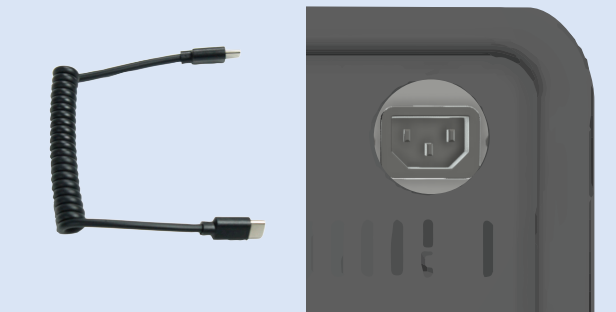
(extra cables may be purchased from JAR Systems)

Connect the Power Cable

Plug the power cable into the back of the station. Then plug the other end of the cable into the wall outlet

Transporting the Station

Disconnect the power cable from the wall outlet and then remove the other end from the back of the station. Bundle the power cable and transport it separately. While carrying the charging station by the handle, place your free hand underneath the station to best support the weight.



Using the Quick-Sense USB-C Module

How it Works

Powered by JAR Systems' proprietary Quick-Sense charging technology, the Adapt4 USB-C automatically senses and adjusts the power supply to meet the needs of each individual device ranging from 2.5W to 45W. The system delivers a fast, efficient, balanced charge and protects against power surges and spikes. LED lights for each port change color when a device is drawing power.

Removing the Quick-Sense USB-C Module for Tabletop Use

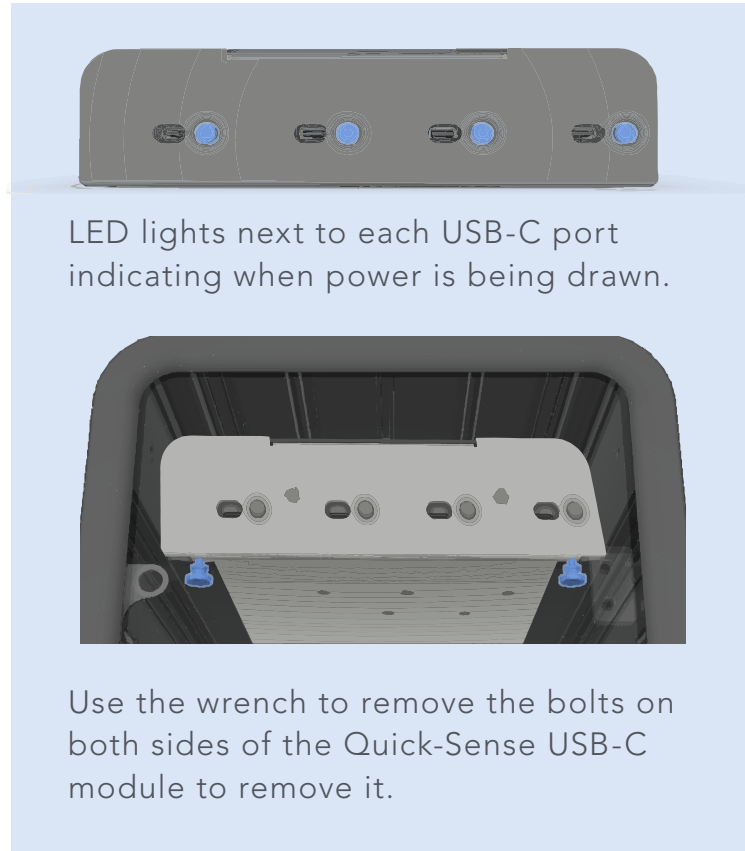
Disconnect all cables from the Quick-Sense USB-C Module

- Unplug the power cable from the wall and then from the back of the station.
- Disconnect the USB-C to USB-C cables from the charging ports on the front of the module.

Transfer the Quick-Sense USB-C module to table.

- If the bolts are in place, remove them with the provided wrench.
- Remove the module and place it on a flat surface.
- Plug the USB-C to USB-C cables into the charging ports on the front of the module. Connect the power cable from the station into the back of the module. Then plug the other end of the charging cable into the wall outlet.

Connect up to four devices for charging. Devices can be charged while in use.



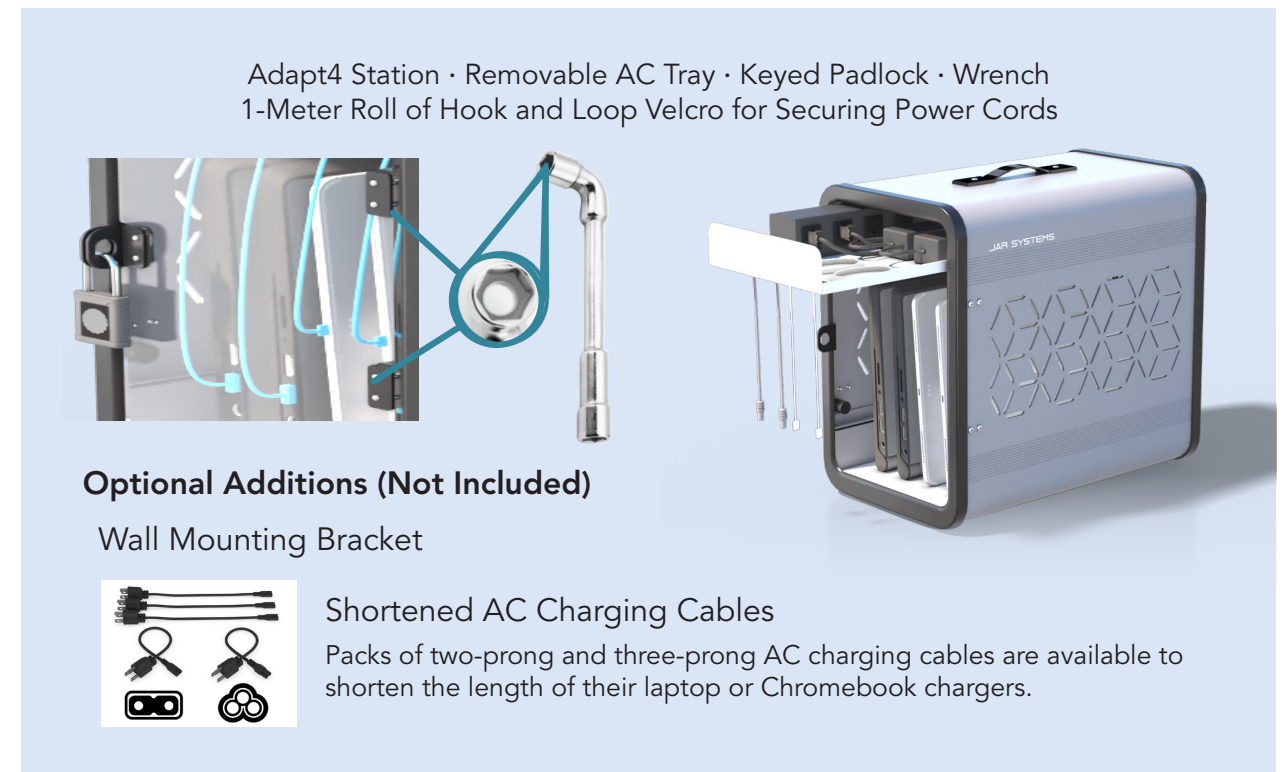
Warnings

Proper Usage and Safety

- To clean and disinfect, wipe the surface with a non-abrasive, lint-free cloth and rubbing alcohol. Do not spray liquids directly onto the station or charging module.
- Keep away from moisture. Do not place any objects filled with liquids near the charging station.
- Do not operate in extreme temperatures. For indoor use only.

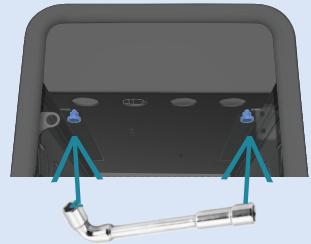
- Children are often unaware of hazards associated with electrical devices and the station and charging module must, therefore, always be used by an adult or with adult supervision.
- Do not connect unsupported items to the charging module or use for any purpose other than its intended use.
- Do not attempt to dismantle, open, or make modifications to the system. Doing so will void any warranties.
- Do not obstruct any ventilation openings.
- Do not sit or stand on the station.
- Do not use an extension cable or daisy-chain to another device.

Included with the Adapt4 AC Station





Removable front door hinges to unbolt.



Bolts to secure the tray in place.

Getting Started

Removing the Door (optional)

The door can be disconnected from the station by removing the four nuts connecting the door hinge to the inside of the frame of the station. This allows for open and unimpeded use of the charging station.

Preventing Removal of Charging Cables

The Adapt4 comes with two bolts installed which prevents the AC cable tray from opening to secure the charging cables inside when the door is open or not present. These bolts can be removed with the wrench to allow the charging cables to be exchanged or openly accessed.

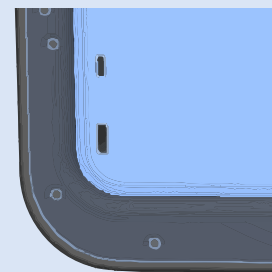
Preventing the Station from Being Transported (optional)

Adapt4 stations feature a Kensington® Security Slot™ and a loop which enables users to utilize a locking cable to secure it in place. (locking cables not included).

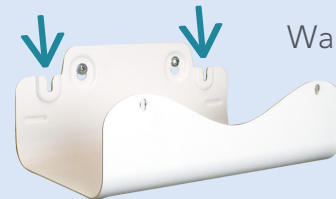
Wall Mounting Bracket (optional, not included)

Mount the bracket using included hardware to fasten the taller side of the bracket to the wall. Attach the provided hardware to one side of the station for it to slide into notches in the mounting bracket and secure into the bracket with the screws through the front.

WARNING: Failure to provide adequate structural strength for this mounting system can result in serious personal injury or damage to equipment. It is the installer's responsibility to make sure the structure to which this mounting system is attached can support five times the combined weight of all equipment. Reinforce the structure as required before installing the mounting system. Always ensure that proper hardware is used for the wall surface type. Never operate this mounting system if it is damaged. Contact JAR Systems for replacement or repair.

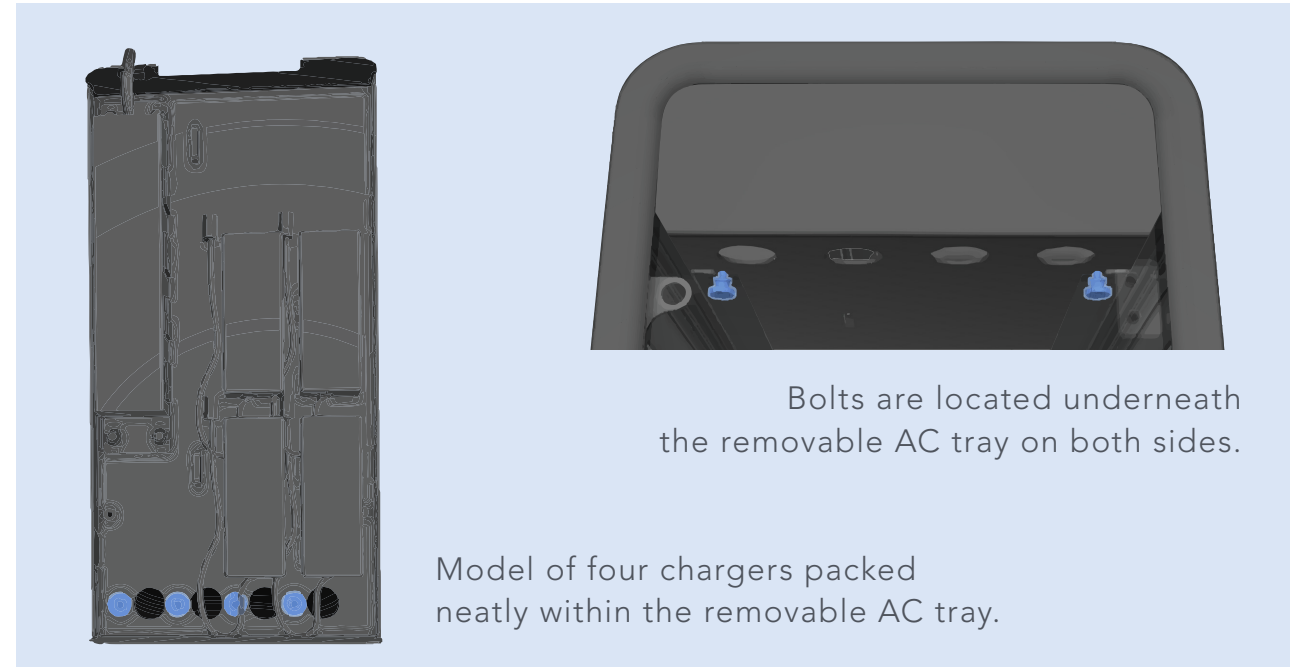


Kensington Security Slot and Loop
(Backside lower corner)



Wall Mounting Bracket notches

Safely secure Adapt4 with two screws to the bracket.



Bolts are located underneath the removable AC tray on both sides.

Model of four chargers packed neatly within the removable AC tray.

Installing Charging Cables

- Efficiently installing the charging cables maximizes the space available within the cable tray. Remove the bolts, located on either side of the tray, with the provided wrench, then pull out the tray.
- Run the first cable through a circular opening in the front of the cable tray. With a device in the station, determine how much of the cable needs to hang down to reach your device's charging port. Once the desired length is found bundle up the extra length of cable in the tray.
- Plug charging cables into the power strip towards the back of the tray. Bundle any excess cable length. The supplied hook and loop fasteners may be used.
If using shortened AC cables (optional, not included) disconnect charging cables from their supplied AC cables and reconnect to the shortened AC cables.
- Repeat the steps for the remaining three charging cables one at a time.
- When all of the cables have been installed, slide the cable tray closed. Place devices into the station and plug them into their charging cables.
- Plug power cable from the back of the unit into the wall.



When moving the Adapt4, use the handle and place the other hand underneath.

Transporting the Station

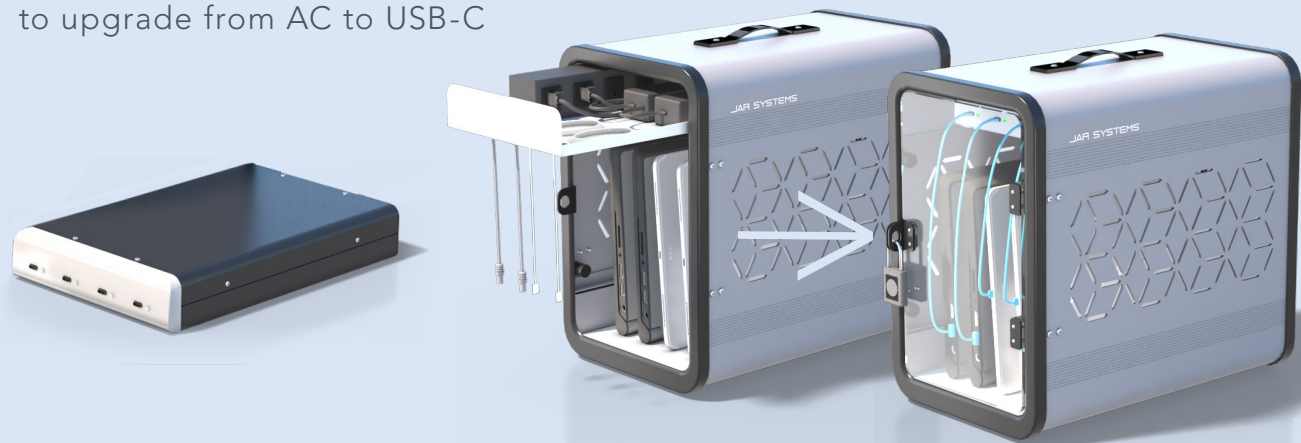
Disconnect the power cable from the wall outlet, bundle the power cable around the cable brackets on the back of the station, and transport it safely. While carrying the charging station by the handle, place your free hand underneath the station to best support the weight.

Upgrading to USB-C Quick-Sense Charging

Replacing the Power Module

The Adapt4 AC is designed to be able to adapt with your devices needs, being able to change from AC to the USB-C version by upgrading the removable tray. Removing the two bolts located underneath the cable tray, pull out the tray, and insert the USB-C module. Secure with the bolts through the bottom of the module.

The module can be purchased to upgrade from AC to USB-C



Warnings

Proper Usage and Safety

- To clean and disinfect, wipe the surface with a non-abrasive, lint-free cloth and rubbing alcohol. Do not spray liquids directly onto the station or charging module.
- Keep away from moisture. Do not place any objects filled with liquids near the charging station.
- Do not operate in extreme temperatures. For indoor use only.
- Children are often unaware of hazards associated with electrical devices and the station and charging module must, therefore, always be used by an adult or with adult supervision.
- Do not connect unsupported items to the charging module or use for any purpose other than its intended use.
- Do not attempt to dismantle, open, or make modifications to the system. Doing so will void any warranties.
- Do not obstruct any ventilation openings.
- Do not sit or stand on the station.
- Do not use an extension cable or daisy-chain to another device.